

Title **Matrix display controller**

Size: A4 Author: Lorenzo Bolla

Revision: 1.2

Date: 15/02/2016 Time: 11:27:15

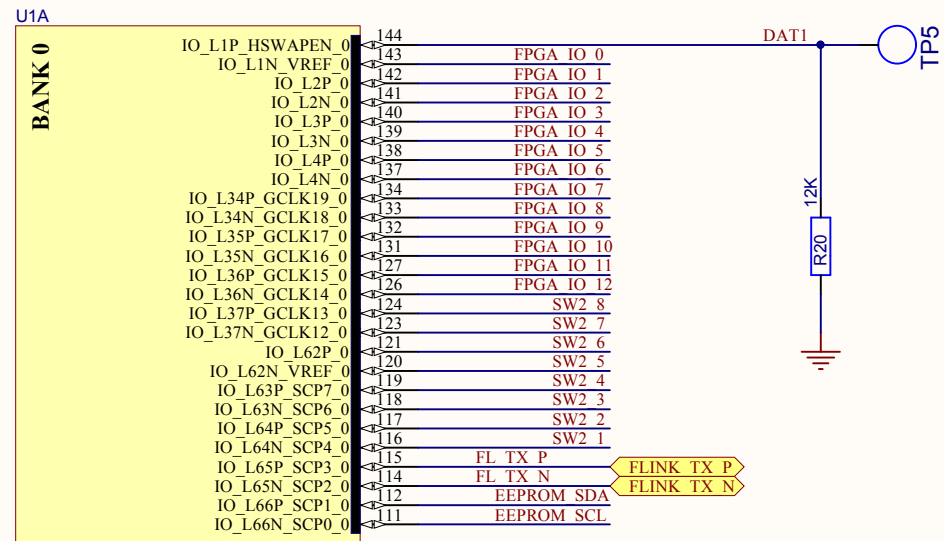
Sheet 1 of 2

Tecnoroll BMB s.r.l.
Via Olona n. 9
21040 Veduggio (VA)
ITALIA

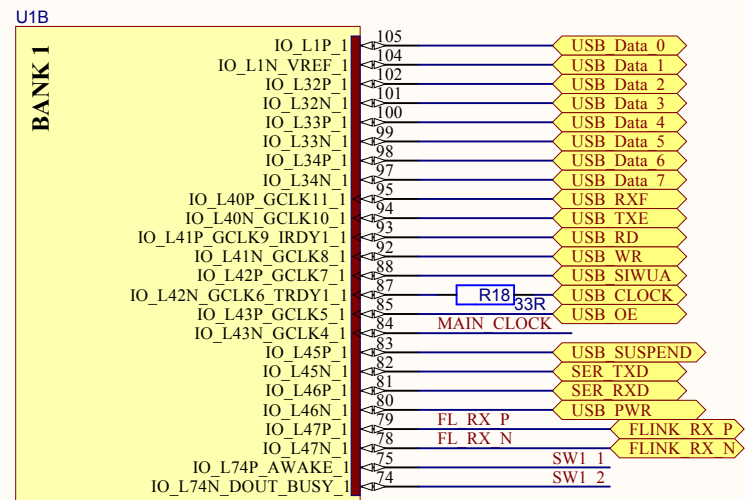


Tecnoroll BMB s.r.l.

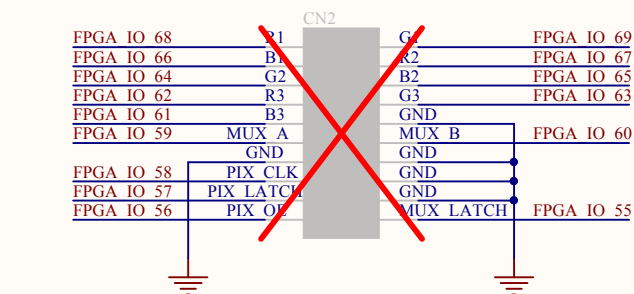
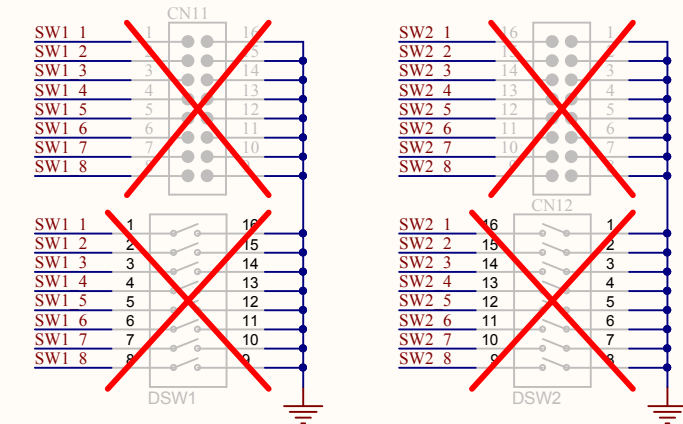
Note:



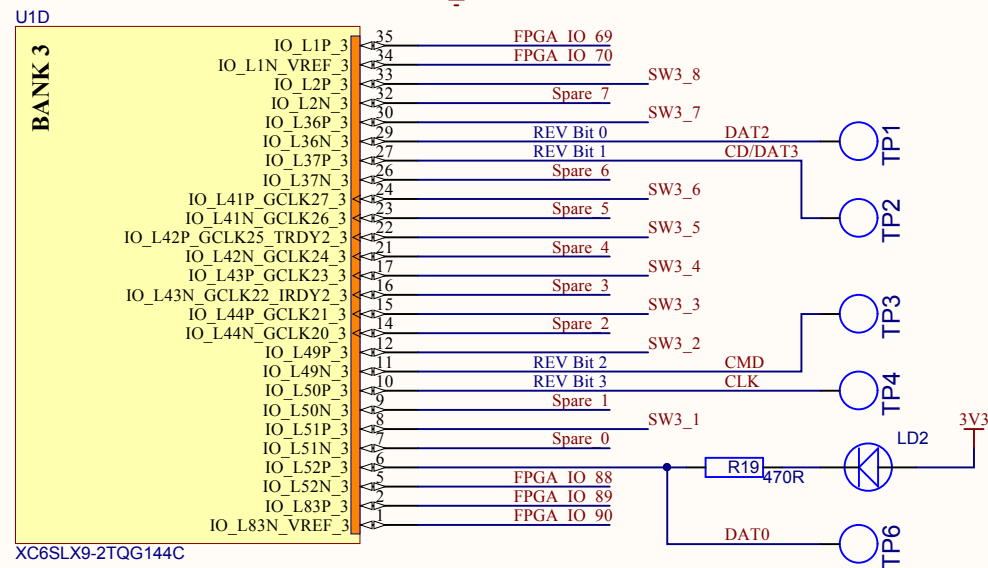
XC6SLX9-2TQG144C



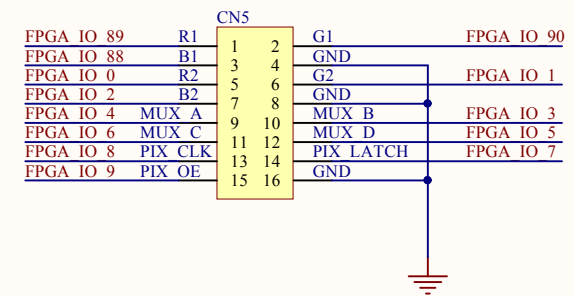
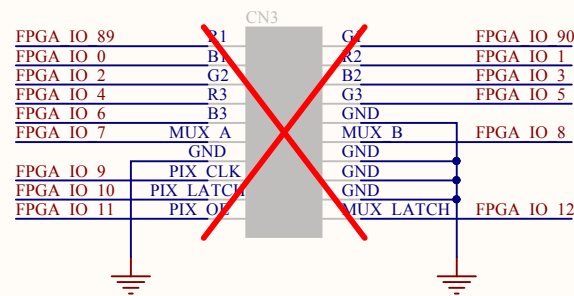
XC6SLX9-2TQG144C



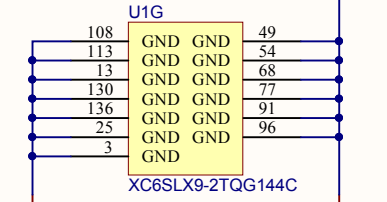
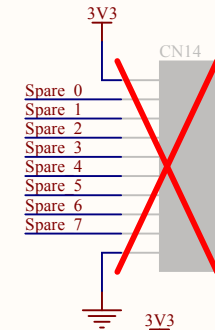
XC6SLX9-2TQG144C



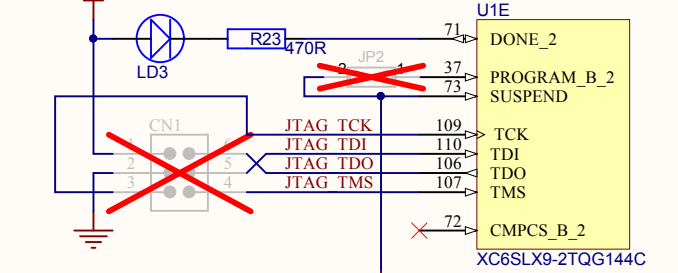
XC6SLX9-2TQG144C



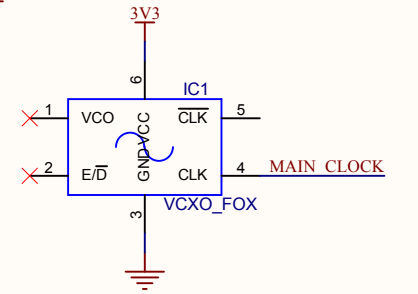
WE-Card Connectors 693071010811



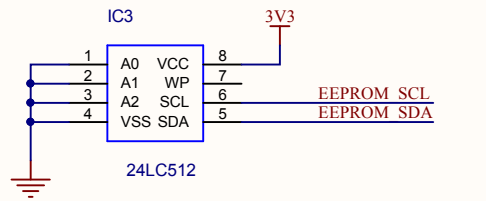
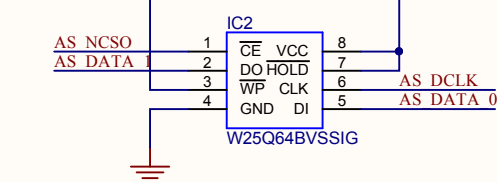
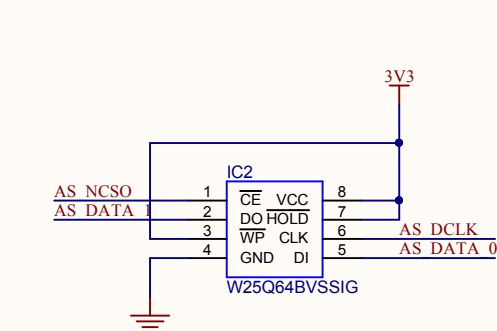
XC6SLX9-2TQG144C



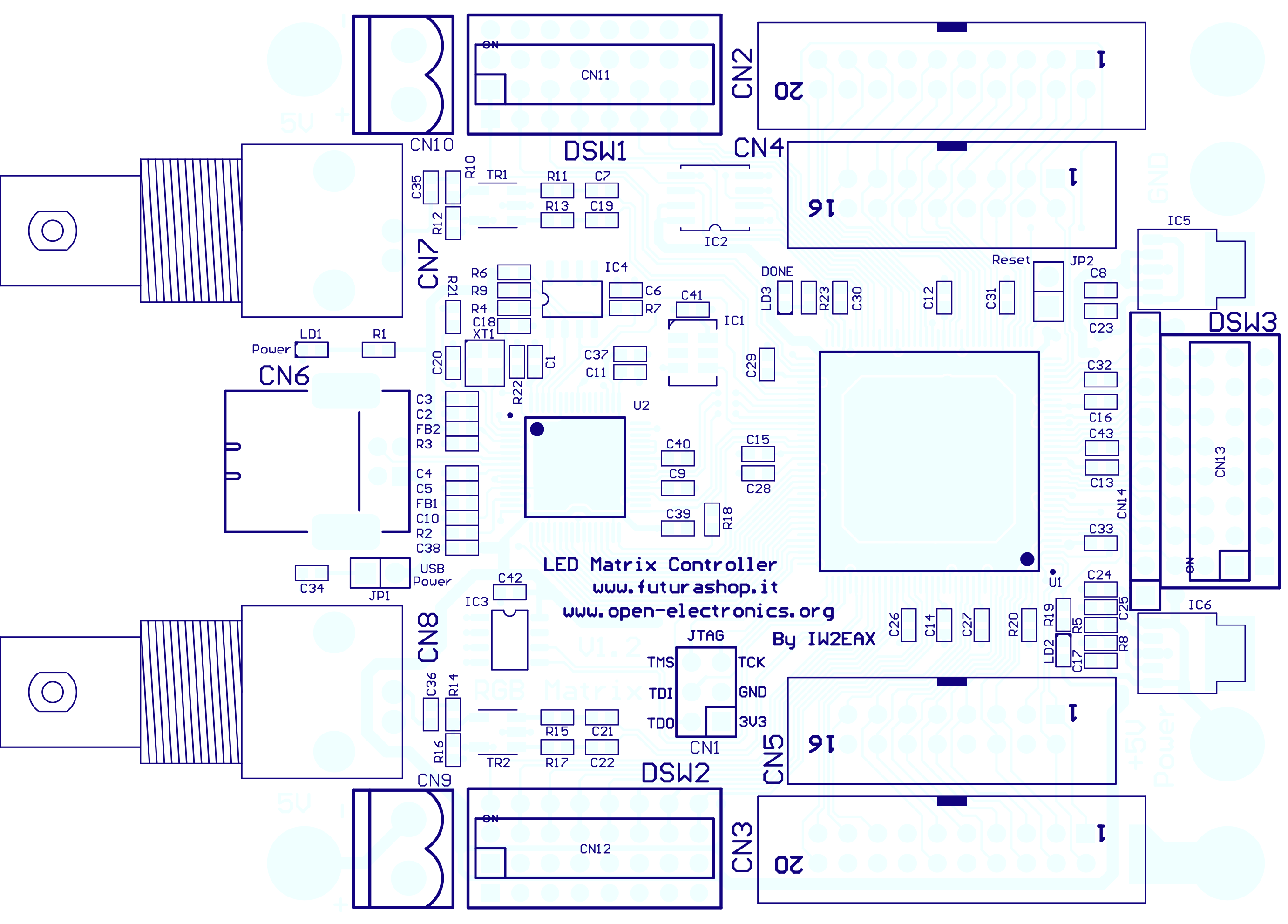
XC6SLX9-2TQG144C



XC6SLX9-2TQG144C



24LC512



LED Matrix Controller
www.futurashop.it

www.open-electronics.org

By IW2EAX

U1.2
RGB Matrix

GND

+5V
Power

5V

5V

IC5

DSW3

CN13

IC6

CN2

20

CN4

16

CN3

20

DSW1

CN11

CN10

CN7

CN6

CN8

CN9

DSW2

CN12

JTAG

TMS
TCK
TDI
GND
TDO
3V3

CN1

CN5

16

CN5

20

C35

R12

R21

R20

C20

C3

C2

FB2

R3

C4

C5

FB1

C10

R2

C38

R16

R14

R17

C21

C22

R10

TR1

R11

R13

C7

C19

R6

R9

R4

C18

XT1

R22

C1

C37

C11

C40

C9

C39

R18

C42

IC3

IC4

C6

R7

C41

IC1

C29

U2

C15

C28

C40

C9

C39

R18

C42

IC3

C42

IC3

C42

IC3

C42

IC3

C42

IC3

C42

IC3

C42

IC3

C42

IC3

C42

IC3

C42

IC3

C42

IC3

C42

IC2

DONE

LD3

R23

C30

C12

C31

Reset

JP2

C8

C23

C32

C16

C43

C13

C33

CN14

C24

C25

R20

LD2

R19

C17

R5

R8

C26

C14

C27

R20

LD2

R19

C17

R5

R8

C26

C14

C27

Power

LD1

R1

C20

C3

C2

FB2

R3

C4

C5

FB1

C10

R2

C38

C34

JP1

USB Power

C34

JP1

USB Power

C34

JP1

USB Power

C34

JP1

USB Power

C34

JP1

USB Power

C34

JP1

USB Power

ON

CN12

ON

CN11

ON

CN10

ON

1

1

1

1

1

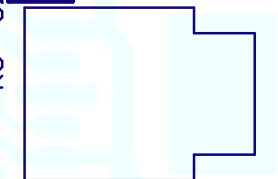
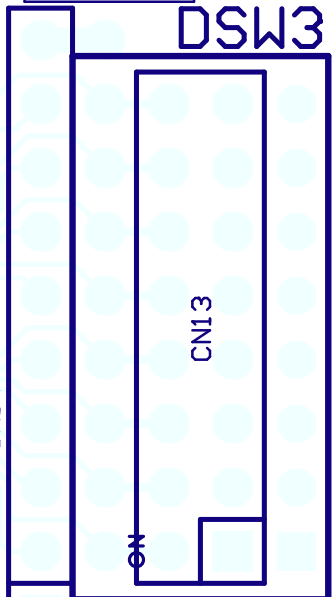
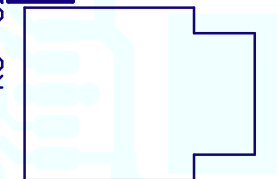
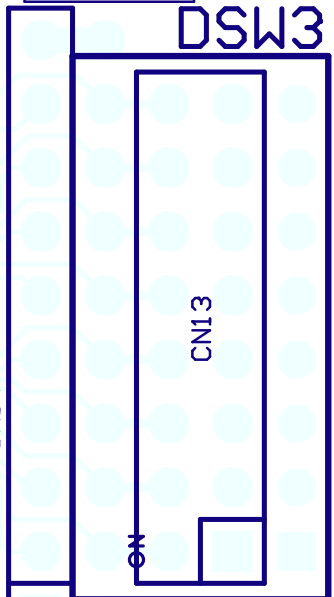
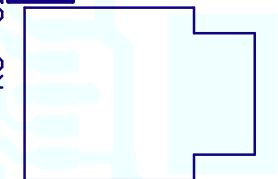
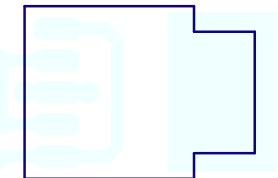
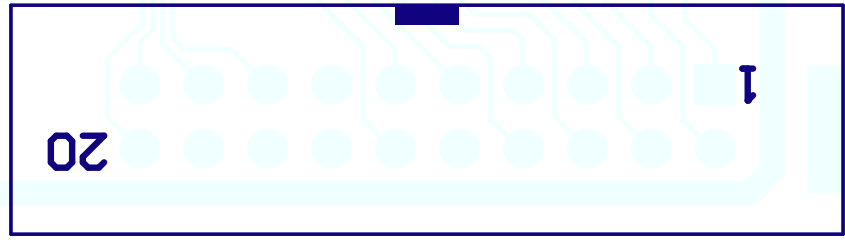
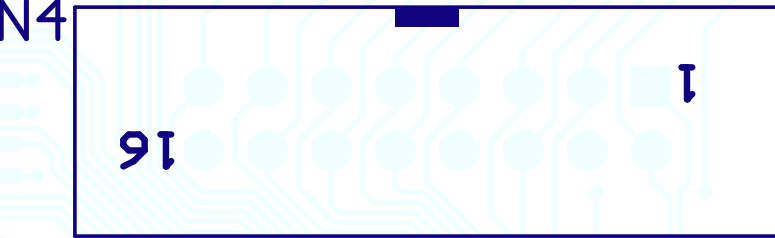
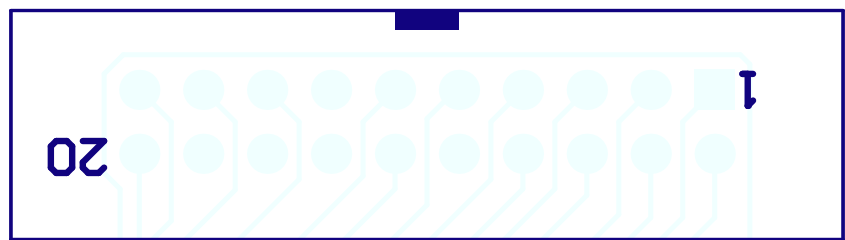
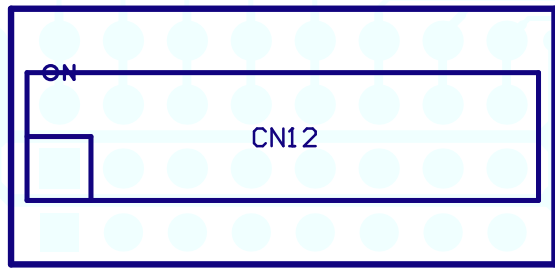
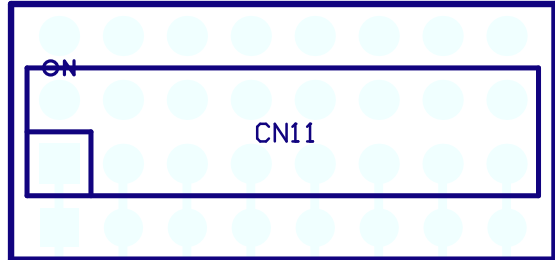
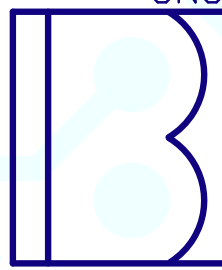
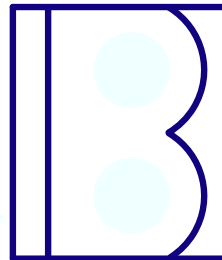
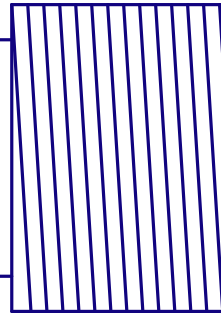
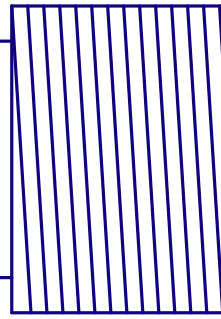
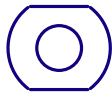
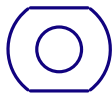
1

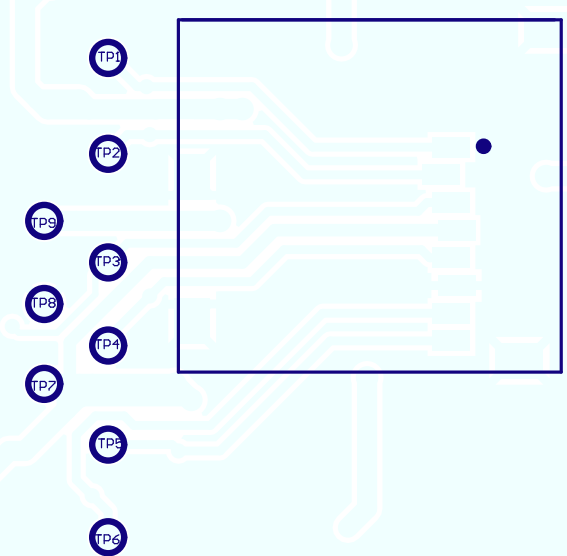
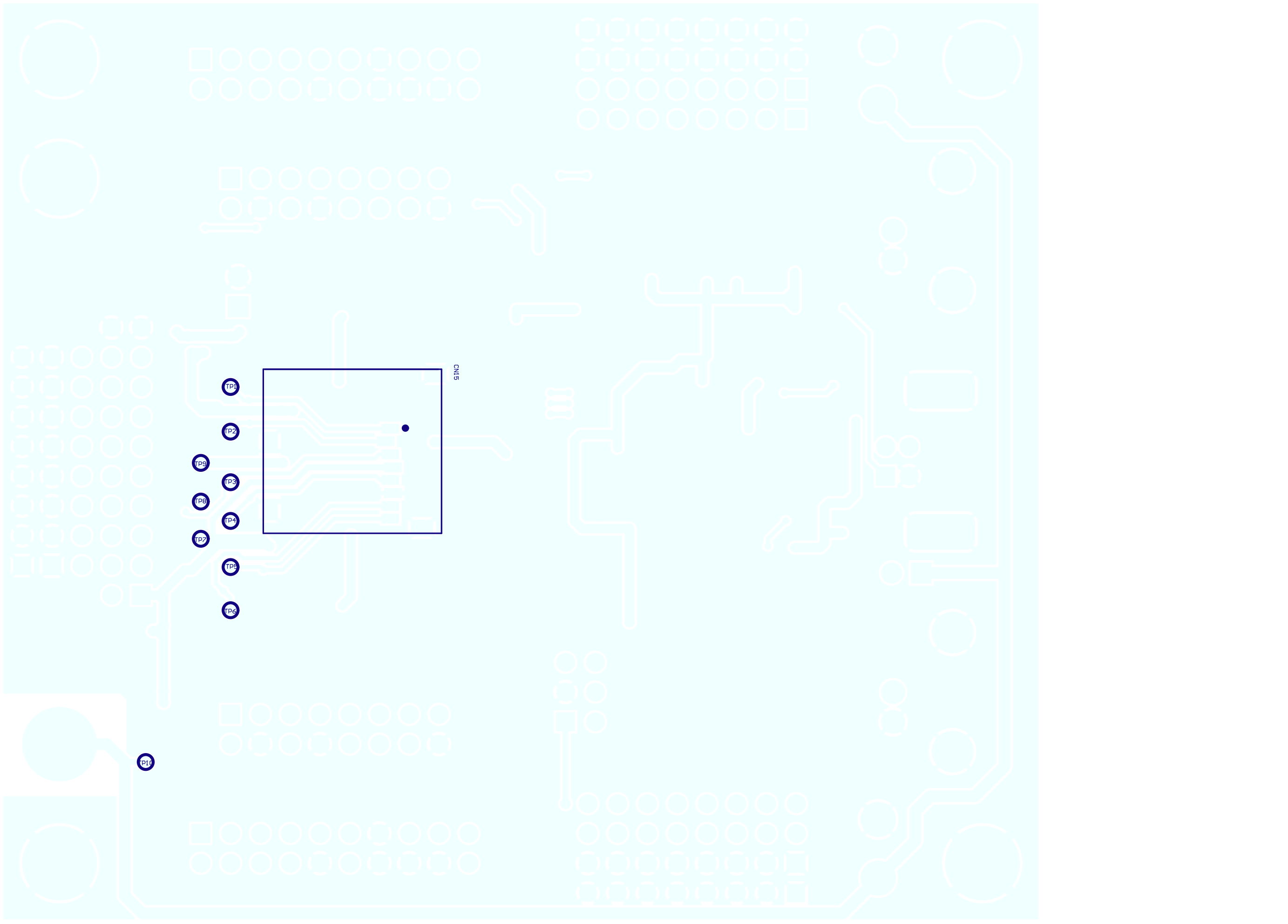
1

1

1

1





TP1

TP2

TP9

TP3

TP8

TP4

TP7

TP5

TP6

CN1



TP11

